

# MILWAUKEE REGION

# Drift



April/May, 2004

## May Solo Meeting Date Change

The May Solo meeting will be held on Thursday, May 19, 2005, 7:00pm Italian Community Center, 631 E. Chicago Street.

## Updates for New Region Directory

We are in the process of updating the Milwaukee Region Directory. We are sending postcards to Region members asking for updated information. If your information is incorrect, please correct it on the card and return it to Toby Schuster. The printing of the new directory is anticipated for this fall.

If you know your information is incorrect, you can also notify Toby by using the form found elsewhere in this issue.

## Travel through Milwaukee - Road Construction Alert:

The Marquette Interchange Project is underway through November 2006. Participants traveling on I-43 near I-94, as well as small segments of I-94 and I-794, will be affected. Visit the Marquette Interchange Project website

[www.mchange.org](http://www.mchange.org)  
for the most current closure information.

## Important Transponder Information From AMB

### IMPORTANT CHARGING INSTRUCTIONS

It is important to notify your racers about the proper charging method for their AMB Rechargeable Transponder. With race season in full swing throughout much of the country, racers are using their rechargeable transponders several times a month. However, during any extended periods of rechargeable transponder inactivity, it is important to keep the following tips in mind:

— Be sure to run your rechargeable transponder through one full charge cycle at least once every two months. This will ensure that your transponder's battery lasts as long as possible.

— Do not store your transponder in an extremely hot or cold place. Keep it between 32 and 122 degrees Fahrenheit.

By following these simple suggestions, you can ensure that your transponder will last for many race seasons to come.

# R.E. View – Julie Komp

As the years go by, the winters seem to get colder and longer, but you know, you just cannot beat spring in Wisconsin. The grass reappears, the temperature starts to rise, the birds start to sing and the growl of motorcycles can be heard on the nearby highway. And spring brings anticipation - anticipation of Motorsports events, of gatherings with friends at tracks, of 'friendly' competition, of parties, and just plain fun. That's what it's all about - putting on fun events and sharing them with friends both old and new. Okay, some may say it's about points and winning a championship, and that's fine too, but we know what it's really about.

We are all looking forward to the season kick-offs of Rally (Glacier Trails May 7<sup>th</sup>), of Solo (Driver's School May 14<sup>th</sup> - sign up soon! 1<sup>st</sup> Event May 15<sup>th</sup>), and of Road Racing (QUAD Regions Driver School Regional Apr 22-24 and Mueller National May 21-22). Each of these programs seems to have a renewed vigor this season and you can feel it in the air when you talk to club members. Special events to note include the Performance Driving Event (PDE) on May 25<sup>th</sup>, a co-sanctioned event with Chicago Region at the new Autobahn racetrack. This is a great entry level event geared at learning how to drive your own car on the track. Plenty of instructors are available to aide in the learning process. Check the region website under Road Racing for details. Speaking of Road Racing, we are eagerly anticipating the return of SCCA Club Racing to The Milwaukee Mile racecourse or roval. Check out the aerial view of the track in this issue. We have a double regional event scheduled there over Labor Day weekend, pending track certification.

Enjoy the last few 'off-season' days and we'll see you soon at one of our events. Have a great racing season!

Julie

## Region Calendar

May	10	Board Meeting	Jul	12	Board Meeting
	14	Solo School		15-17	BRIC at RA
	15	Solo #1 at Miller Park		22-24	Cat National and Milwaukee Cup
	19	SOLO MEETING		26	Solo Committee
	21-22	Mueller National at RA		31	Solo #5 at MGA
	25	PDE at Autobahn			
	30	Solo #2 at Miller Park			
Jun	4-5	Rennen Double Regional at BHF			<b>Board Meetings</b> - 6:30pm the 2nd Tuesday of the month at The Hilton Milwaukee River, 4600 N. Port Washington Road.
	14	Board Meeting			<b>Solo Meetings</b> - 7:00pm, the last Tuesday of the month at the Italian Community Center, 631 E. Chicago
	18-19	Bonneau Double Regional at RA			
	18	Solo #3 at Miller Park			
	19	Solo #4 at Miller Park			
	28	Solo Committee			

## 2005 Road Racing Schedule

April 22-24

Quad Double Drivers School/Regional at Blackhawk

May 21-22

Mueller National at Blackhawk

June 4-5

Rennen Double Regional at Blackhawk

June 18-19

Bonneau Double Regional at Road America

July 15-17

BRIC at Road America

July 23-24

Cat National and Milwaukee Cup at Road America

Sept 3-4

Regional at Milwaukee Mile

Sept 16-18

VSCDA at Road America

## 2005 Solo Schedule

May 14 - Drivers School, 8am

Meet at: Kelly's Bleachers

5218 W. Bluemound Road

\$60, limited to the first 50 People

Sponsored by Big Bear Tire

May 15 - Solo #1

Sponsored by Big Bear Tire

May 30 - Solo #2 (Memorial Day)

Sponsored by Grassroots Motorsports

June 18 - Solo #3

Sponsored by Badger Bimmers]

June 19 - Solo #4

Sponsored by The Dent Doctor

July 31 - Solo #5 at MGA in Burlington

Sponsored by Alexander's Auto Care

Aug. 6 - Fun, non-points event for SCCA members only

Sept. 5 - Solo #6 (Labor Day)

Oct. 1 - Solo #7

Sponsored by Kelly's Bleachers

Oct. 2 - Solo #8

Sponsored by Prototype Techniques

Event registration: 7:15 am to 8:30 am

Course walking 7:45 to 9:15 am

Tech inspection: 7:30 am to 8:45 am

Drivers meeting: 9:30 am

First car off at 10:00 am

Membership applications will be available and pre-registering is encouraged. There will be a hard registration cut off at 8:30am on the day of the event. Please be prompt! Showing up after that won't allow you time to walk the course. Drivers not familiar with the course slow the event down which isn't fair to others.



## HELP!!!!!!

### Drift Contributors Wanted

**Have an idea for an article?**

**Want to contribute photos?**

**Have an amusing anecdote?**

**Have some fun gossip?**

Contact the Editor,  
Chris Cwiklinski  
ccwikl@yahoo.com

# 2006 SCCA Runoffs Date Announced, Moves To October

**From:** Eric Prill, SCCA Director of Communications

**Sent:** Wednesday, May 04, 2005 12:01 PM

For Immediate Release

## SCCA RUNOFFS DATES SET FOR 2006

### *Event Returns to October; Hotel Information and Rates Available*

**TOPEKA, Kan. (May 4, 2005)** - Sports Car Club of America, Inc. has announced the dates for the 2006 SCCA National Championship Runoffs®, taking a page of its own history and returning the 43<sup>rd</sup> running of the classic to a more traditional October date for the first event at Heartland Park Topeka (Topeka, Kan.).

The 24 National Championship Runoffs races will be held Friday, Oct. 13 through Sunday, Oct. 15. As has been tradition, the event officially commences on Monday, Oct. 9 for practice, followed by three days of qualifications Oct. 10–12 to set the starting lineups.

Heartland Park Topeka will give Runoffs participants a first look at the Runoffs–only track configuration during the promoter test week, Oct. 1–8.

“Eastern Kansas weather is normally very cooperative during this time of the year, and we’ve got the opportunity to extend the time between the final National events of the season and the Runoffs,” SCCA Club Racing Director Terry Ozment said. “This will give competitors more time to prepare for the Runoffs as well as potentially boost participation in the late–season events.”

In addition to the date announcement, SCCA, with assistance from the Topeka Convention and Visitor’s Bureau, has arranged special “SCCA” rates from Oct. 1–15 with many area hotels. The downtown Ramada Inn has been selected as the Official SCCA Event Host Hotel, offering rooms and a complimentary breakfast for a standard rate of \$75 plus tax per night. Executive Rooms (\$85) and suites (\$135) are also available. Reservations may be made at any time through the hotel (800) 432–2424, and rates are guaranteed through Sept. 1, 2006.

Several other area hotels have locked in an “SCCA” rate, although some offer different packages with each rate. A list follows this release, and hotels should be contacted directly for complete details.

In addition to hotel accommodations, Heartland Park Topeka will also provide racers, workers and spectators ample family–friendly camping opportunities during Runoffs testing and competition.

The SCCA National Championship Runoffs® is the annual championship event for the nation’s top amateur road racing drivers, and is regarded as the “Olympics” of motorsports. Featuring more than 700 participants annually, the weeklong event marks its 42<sup>nd</sup> running this September, with the SCCA National Championship Runoffs Presented by Kohler at Mid–Ohio Sports Car Course.

For more information about the SCCA National Championship Runoffs, please visit [www.scca.com](http://www.scca.com). For more information on Heartland Park Topeka, log on to the track’s website at [www.hpt.com](http://www.hpt.com).

Additional hotels offering SCCA rates for the 2006 SCCA National Championship Runoffs. All listed prices are per night and do not include tax. Links to all area hotels are available through the TCVB Web site at [www.topekacvb.org](http://www.topekacvb.org).

Amerisuites (\$99)

Best Western Candlelight Inn (\$79)

Best Western Topeka Inn (\$79)

Club House Inn and Suites (\$79)

Country Inn and Suites (\$99)

Holiday Inn (\$74)

Holiday Inn Express (\$74)

Motel 6–Fairlawn Road (\$71.99)

Motel 6–Wanamaker Road (\$75.99)

Red Carpet Inn (\$37.95)

Regency Inn (\$45)

Senate Luxury Suites (\$72)

# SCCA Solo Championships Get New Home, Date in 2006

**From:** Eric Prill, SCCA Director of Communications

**Sent:** Thursday, May 05, 2005 12:02 PM

For Immediate Release

## SCCA SOLO CHAMPIONSHIPS GET NEW HOME, DATE IN 2006

**TOPEKA, Kan. (May 5, 2005)** - Sports Car Club of America, Inc. has announced that the 2006 The Tire Rack® SCCA Solo National Championships and The Tire Rack® SCCA ProSolo Finale will be held at Heartland Park Topeka, utilizing its paddock areas and road course. Additionally, the event dates move back one week and will be contested in late September.

“We’re very happy to partner with Heartland Park to create nearly a month of SCCA Championship competition in 2006,” SCCA Director of Solo Tasha Goodale said. “The new facility will provide ample room and amenities for the competitions and an improvement in the course surface. We’re also able to move the events a week later without stepping on the Club Racing Runoffs®, which will also be held at Heartland for the first time.”

The 2006 events will begin the weekend of Sept. 23–24 with The Tire Rack SCCA ProSolo Finale. Following the traditional Monday off, the four–day The Tire Rack SCCA Solo National Championships begin Tuesday, Sept. 26, concluding Friday, Sept. 29.

“We hope to continue the tradition established by David Stremming and the Metropolitan Topeka Airport Authority of hosting a wonderful Solo event,” Heartland Park Topeka Owner Raymond Irwin “With the Runoffs and now the Solo event coming to Heartland Park Topeka in 2006, we are thrilled to be hosting the two largest amateur motorsports championships in the world in the same month.”

“Forbes Field has been a wonderful host for the last 10 years and will host this year’s events as well,” Goodale added. “We have to extend a special thanks to Dave Stremming and the entire MTAA for being a strong supporter of the Solo program for so many years.

“That said, we’re excited to move ‘down the road’ to begin the next chapter of National Solo history.”

SCCA sanctions more than 1500 regional and national Solo competitions each year, including The Tire Rack® SCCA Solo National Tour and The Tire Rack® SCCA ProSolo National Series, as well as the annual The Tire Rack® SCCA Solo National Championships held each September in Topeka, Kan. That event hosts more than 1100 competitors, making it arguably the largest amateur motorsports championship in the world. SCCA’s version of autocross, Solo has not only been a part of the motorsports ladder system for many of today’s top sports car racers, but also remains a competitive destination in itself, featuring some of the closest grassroots motorsports competitions in North America.

For more information about SCCA and its Solo activities, please visit [www.scca.com](http://www.scca.com). For more information about Heartland Park Topeka, visit [www.hpt.com](http://www.hpt.com).

—

# REMINDER

## IMPORTANT MINOR WAIVER INFORMATION

### ALL PERMANENT (PINK) MINOR WAIVERS AND THE HOT PINK MINOR PHOTO IDS ARE NOT VALID AS OF MAY 1, 2004

As you know, every minor (under the age of 18) needs a signed minor waiver in order to be able to enter the track premises. There is no longer a permanent waiver; a new waiver must be filled out each **CALENDAR** year.

The minor waiver form is a 2-part form. As with previous minor waiver forms, only a parent or legal guardian can sign the form, but the requirement for witnesses to the signatures are different than in the past.

**ANNUAL WAIVER:** For an Annual Waiver, the form **MUST** be signed by **BOTH** parents or legal guardians. **The signatures must be witnessed by an SCCA licensed Registrar or the waiver form has to be notarized.** If there is only one parent/guardian or if a parent has sole custody, the appropriate box so attesting must be initialed by the parent/guardian. A new yellow minor photo ID can be issued after the new Annual Waiver is completed. There may be a charge for this yellow photo ID.

**SINGLE EVENT MINOR WAIVERS:** For a single event, the minor waiver must be signed by at least **ONE** parent/legal guardian. **The signature on this must be witnessed by an SCCA licensed Registrar or Steward whether at or away from the event site or it may be notarized.**

**EVENT WAIVERS:** An adult no longer has to sign the event waiver for a minor.

Please, please, please remember, and remind your guests and crew, if they are bringing a minor to the track and you or they are not his/her parent or legal guardian, the minor must have a waiver signed by his/her parent or legal guardian and witnessed by a licensed Registrar or a Steward or the form must be notarized **or the minor will not be allowed to enter the track.**

**If you have any questions or need blank minor waiver forms** for your grandchildren, nieces, nephews, other relatives, friends, friends of friends, friends of your kids, etc. please contact the event Registrar or the Milwaukee Region Goddess, Chris Cwiklinski, (414) 449-3862

## **WELCOME NEW MEMBERS**

Paul Chrt  
Nicholas Langer  
Casey Marshall  
Pete Papageorge  
Kevin Rogers  
Martin and Angela Wiedhoeft

## Check out the Milwaukee Region



### Web Site



Road Racing Results  
Solo II Results Rally Results  
Race Photos  
Region Information  
Links to Other Motorsports Pages  
<http://www.scca-milwaukee.org>

## 2005 Incentive Program

To qualify you must work **BOTH** days of **BOTH** the **Bonneau Double Regional** (June 18–19) and the **Cat National** (July 23–24) and one of the options listed below.

Being a full day worker at any day of a Milwaukee Region PDE (formerly known as HPCCC) will be considered a “Wild Card Day” and can be substituted for one non–required race days listed in Option 1 or Option 2. If there are multiple PDEs only one “Wild Card Day” can be used.

	<b>Option 1</b>	<b>Option 2</b>	<b>Option 3</b>
	Mueller National	Mueller National	VSCDA
	Rennen Double Regional	Rennen Double Regional	
	VSCDA	VSCDA	
<b>TO GET:</b>	<b>\$75</b>	<b>\$20</b>	<b>\$20</b>

\*or 4 days from the list and a “Wild Card” Day

\*\* or 3 days from the list and a “Wild Card” Day

## **NEW ROAD AMERICA BRIDGE**

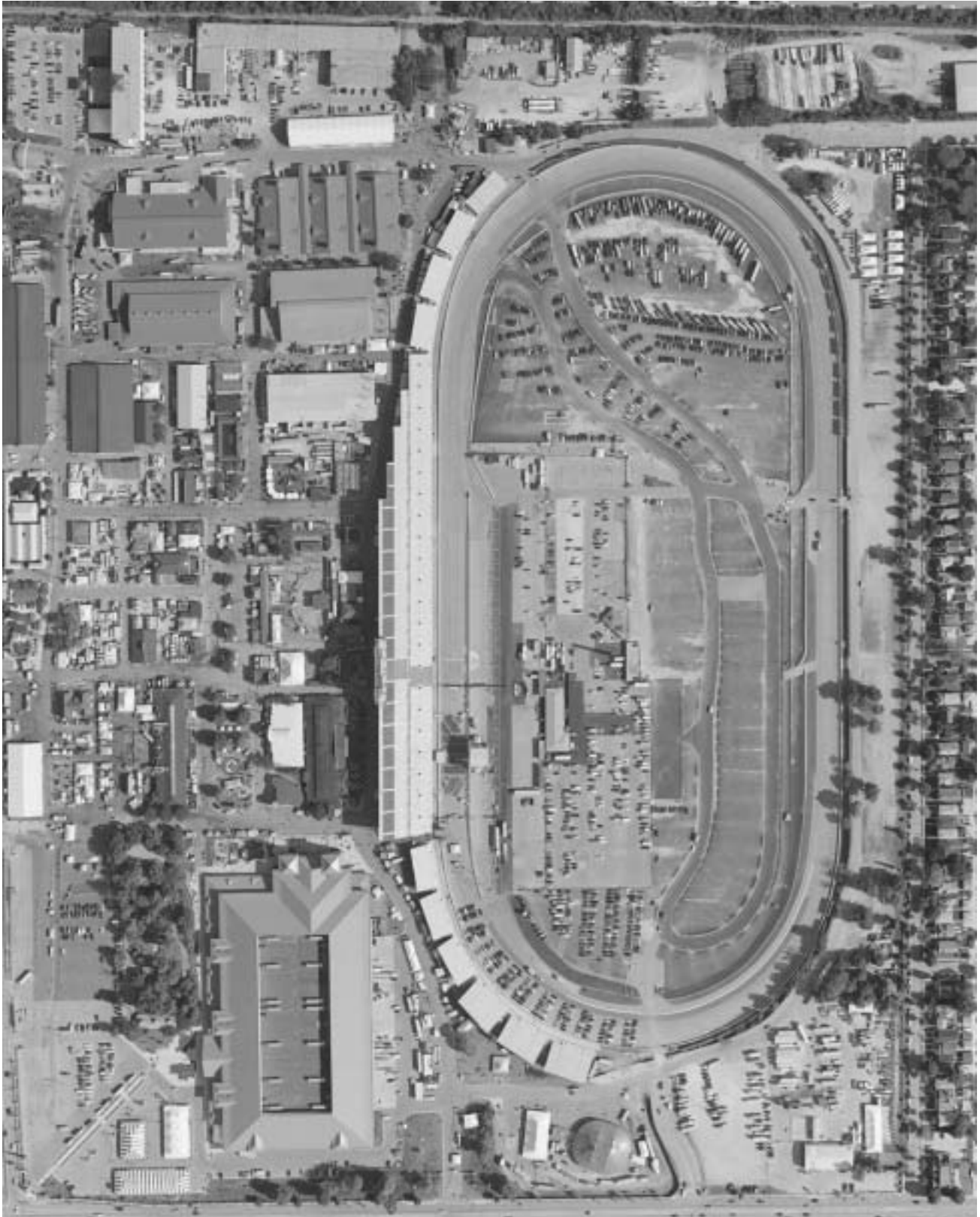
This bridge is between corners 10 and 11 running from the camping area to the outside of the track.

This view is looking towards Corner 11, the motorcycle chicane is on the right. Plans are to build grandstands there. Supposedly you’ll be able to see from the carousel to the kink.



## THE MILWAUKEE MILE

While we await the decision on track certification for our possible Labor Day regional, here is a teaser – An aerial view of the Milwaukee Mile road course. Turns 3 and 4 of the oval are at the top of the picture (north). The grandstands and main straight of the oval is at the left. The course is intended to run clockwise from the start finish line (opposite the normal oval direction), entering the infield part of the course at approximately Oval turn 4. You would then exit the infield turning right towards Oval turn 3 and then go clockwise the rest of the way around the oval.





# 2005 Region Directory

## Board of Directors

### Regional Executive

#### Julie Komp\*

(920) 849-7626

scca\_milw\_region\_re@yahoo.com

### Vice Regional Executive

#### Treasurer

Jim Roemer\*

(262) 650-7904

lola540@hotmail.com

### Secretary

### Board Members

Jeff Cashmore

(262) 784-9670

cashmo@hotmail.com

Mike Cudahy

(414) 351-1003

mike@prototypetech.com

Chris Cwiklinski\*

(414) 449-3862

ccwikl@yahoo.com

Jim Dentici\*

(414)333-6776

Dentici@aol.com

Angelo Gazzola\*

agazzola@frontier.net

Tony Machi

(494) 423-0867

usguys96@aol.com

Roy Rogers

(262) 369-0782

rrogers650@aol.com

Mike Piotrowski

(414) 482-0941

mikepio@sbcglobal.net

Bart Wolf

(920)876-4091

bwolf28@yahoo.com

\*Denotes Executive Committee

## Other contacts

### SCCA

(800) 770-2055

www.scca.org

### Area 5 Director

Mike Engelke

40 Dove Avenue

Chilton, WI 53014

(920) 849-7626

meng@charter.net

### CenDiv Sports Car Correspondent

Cindy Hylton

(317) 892-4206

chlhyton@iquest.net

## Chairpersons

### Activities

Tony Machi

(494) 423-0867

usguys96@aol.com

### Competition Committee

Mike Alexander (Chair), Bruce

Lindstrand, George Kofman, Mike

Cudahy, Steve Forrer

### Editor

Chris Cwiklinski

(414) 449-3862

ccwikl@yahoo.com

### Election Committee

Bob "Honda" Clark

(414) 351-1465

jskrclark@aol.com

### Licensing (Novice)

Bob "Honda" Clark

(414) 351-1465

jskrclark@aol.com

### Licensing (Regional/National)

Bob Lybarger

(815) 344-2447

### Membership

Sue Schuster

(414) 416-4011

tobin.j.Schuster@bigfoot.com

### Merchandise

Joellyn Key

(920) 832-0568

joello60@aol.com

### Pointskeeper (National)

Andy Weldon

(317) 297-5474

andyweldon@sbcglobal.net

### Pointskeeper (Area 5 Champ Series)

Kevin Coulter

(630) 985-5995

kjc@core.com

### Rally

Tim Craft

(262)633-7056

tim@craft.name

### Region Counsel

Bill Porter

(262) 241-3867

### Solo Chairman

Dan Kimber

(262) 752-0923

djkimber@hotmail.com

### Webmasters

George Kofman

scca.webmaster@

motorsports-exchange.com

Jeff Cashmore

cashmo@hotmail.com

### Road Racing

## Regional Administrators

### Course Marshal

Dennis Kay

(262) 338-2081 h

dennis.kay@med.ge.com

### Flagging & Communications

Toby Schuster

(414)-416-2371

tobin.j.Schuster@bigfoot.com

Asst: Randy Langer

(414) 570-9794

rclanger@hotmail.com

### Grid

Gary Soiney

(262) 895-2238

pdsges@aol.com

Asst: Dan Doiney

### Medical

Dr. Jeff Gaver, MD

(262) 965-2914

jpgaver@execpc.com

### Paddock

Joyce Johnson

(414)545-8929

rakhan@milwpc.com

### Pits

Dick Gmach

(920)467-8655

rlgmach@bytehead.com

### Registration

Chris Cwiklinski

(414) 449-3862

ccwikl@yahoo.com

### Rescue

Eric Fairfield

(608) 846-2062

eric.fairfield@charter.net

Asst: Dave Karling

(630) 830-6452

dakarling@aol.com

### Sound Control

Nathan Engelke

(262) 893-6393

furigno@yahoo.com

### Stewards

Angelo Gazzola

agazzola@frontier.net

### Tech Inspection

Dennis Troemel

(262) 547-6089

### Timing & Scoring

Bill Rudolph

(414) 771-1437

Asst: Jamie Kipp

Asst: Pete Klinger

## Solo

### Solo Committee

Dam Kimber (Chair), Jeff

Cashmore, Clayton Goldsmith,

Sam Karp, Tony Machi, Marshall

Moore, Jeff Slater, Tim White,

Steve Wynveen

### Solo/Board Liaison

Jeff Cashmore

(262) 784-9670

cashmo@hotmail.com

### Solo Information

Tony Machi

(494) 423-0867

usguys96@aol.com

## Solo Specialty Chiefs

### Audit

Denise Cashmore

cashmo@hotmail.com

### Equipment

Rob Bedelis

lugnuts@execpc.com

### Grid

Amir Mahmoud

rotaryrocket7302@aol.com

### Junior Kart Program Liaison

Jeff Cashmore

(262) 784-9670

cashmo@hotmail.com

### Novices

Clayton Goldsmith

clayton@kingmotorsports.com

### Registration

Sam Karp

(414) 975-0846

karsam@hoptmail.com

### Sponsorship

Jeff Slater

jeffslater@wi.rr.com

### Tech

Todd Lorino

toddlorino@aol.com

### Timing

Steve Wynveen

# Check Your Directory Information

Please send all address and member information changes to Toby Schuster at the address below. If you are a spouse member whose last name differs from that of your spouse, and you would like a separate directory listing, please note that on the sheet below with the correct information and send it in. Please complete the necessary information/changes on the form below and return it to:

Toby Schuster  
1150 N. 50th Street  
Milwaukee, WI 53208

NAME: \_\_\_\_\_

NAME OF SPOUSE: \_\_\_\_\_

NAME(S) OF CHILDREN: \_\_\_\_\_

ADDRESS: \_\_\_\_\_

CITY: \_\_\_\_\_ STATE: \_\_\_\_\_ ZIP: \_\_\_\_\_

HOME PHONE: \_\_\_\_\_ WORK PHONE: \_\_\_\_\_

E-MAIL: \_\_\_\_\_

## CenDiv Schedule

[http://www.scca-milwaukee.org/MISC\\_PDF\\_FILES/2005\\_CenDiv\\_Schedule.pdf](http://www.scca-milwaukee.org/MISC_PDF_FILES/2005_CenDiv_Schedule.pdf)

## Region Race Entry Forms

<http://www.scca-milwaukee.org/RoadRacing/2005/roadracesched.html>

Scroll down and click on the entry form(s) you want. At this time the Milwaukee Mile event on Labor Day is not yet confirmed.